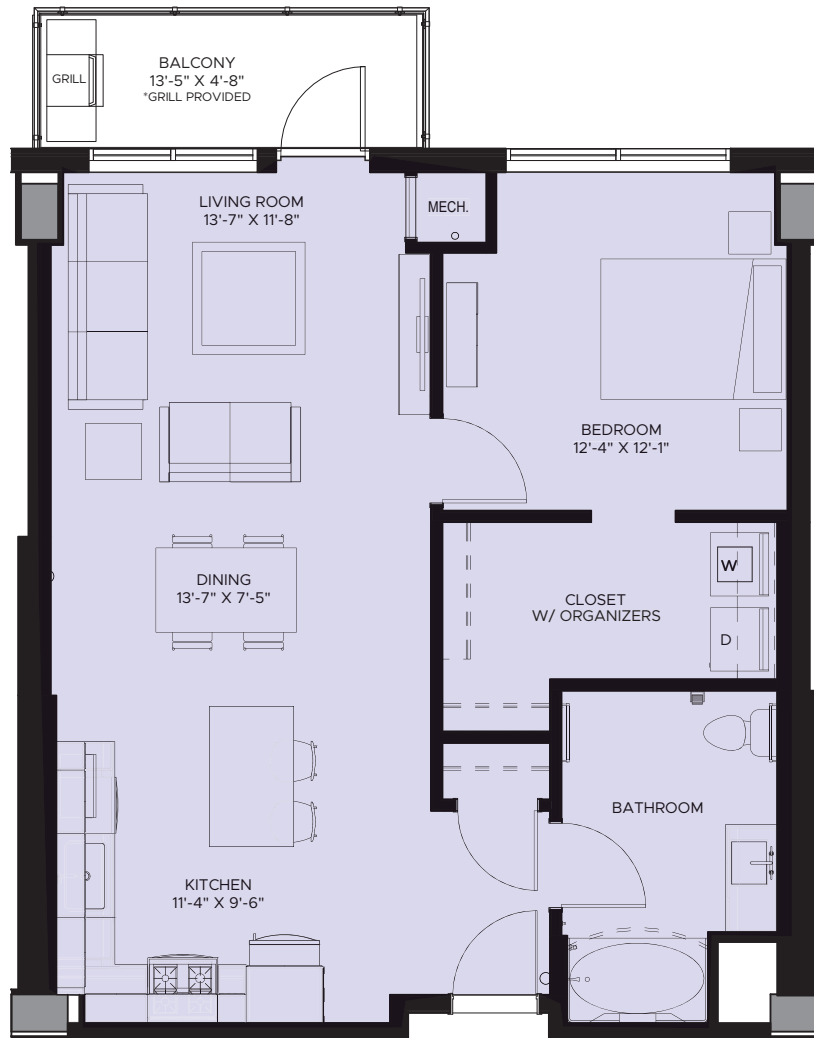


One Bedroom A-7A

1 BED / 1 BATH

848

SQ. FT.



240 PARK/AVENUE

240 Park Avenue Avenue | Minneapolis, MN 55415

www.240ParkAve.com

Utility charges are separate from monthly advertised rent charges. A flat monthly fee is charged from 240 Park Avenue based on floorplan type and billed to your rent account through the community.

This monthly fee includes water, sewer, trash/recycling, gas, cable, and internet services. Monthly rates are as follows: 1 Bedroom or 1 Bedroom + Den: \$99/month. 2 Bedroom or 2 Bedroom + Den: \$149/month. 3 Bedroom or any

Penthouse: \$199/month.

The utility package does not include electricity usage. Electricity is individually metered and billed to you monthly based on actual usage from Xcel Energy regarding the leased premises.

